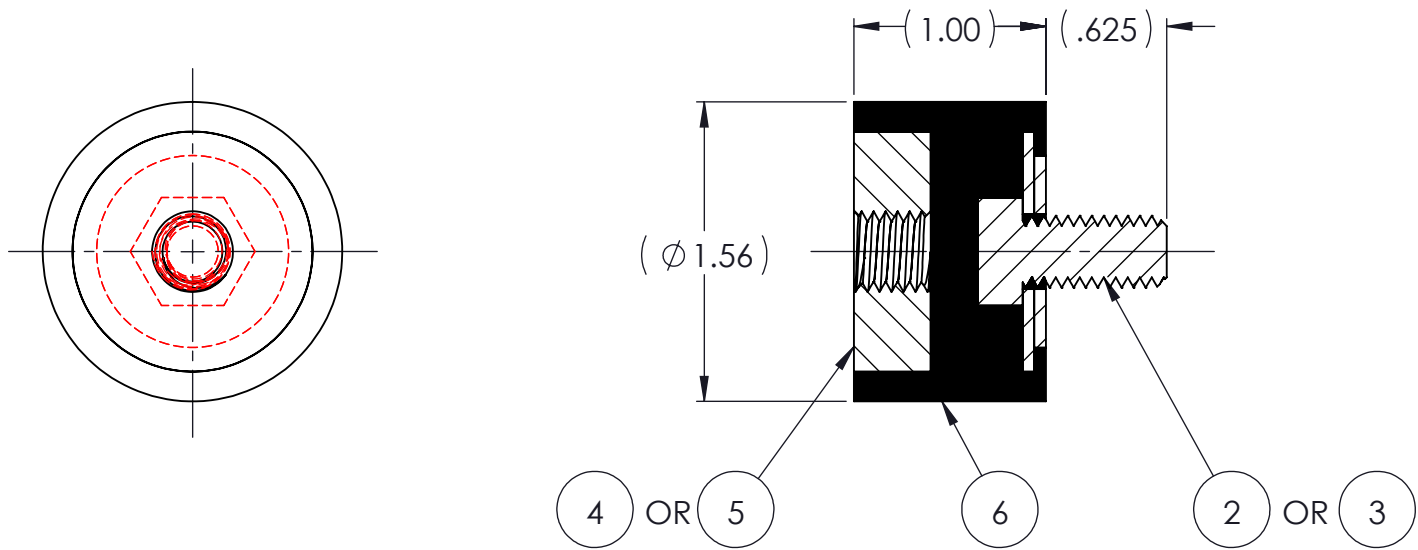
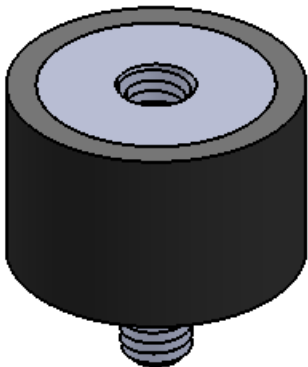


REVISIONS			
REV.	DESCRIPTION	DATE	APPROVED
1	INITIAL RELEASE OF DRAWING	1/14/2015	BS



NOTES:

- 1 MATERIAL: 50 DUROMETER SHORE A, NATURAL RUBBER OR NEOPRENE.  
2 ALL DIMENSIONS ARE REFERENCE.  
3 AVAILABLE WITH THREADS OF 3/8-16 UNC AND M10 X 1.5.

AR	ELASTOMER	KS375-6	1	6
1	MK3750-M10SS	MK3750-M10SS		5
1	MK375016TSS	MK375016SS		4
1	MK370-M10SS	MK370-M10SS		3
1	MK370SS	MK370SS		2
	KS375	KS375		1
QTY.	DESCRIPTION	PART NUMBER	MATERIAL OR NOTES	ITEM

PROPRIETARY AND CONFIDENTIAL <small>THE INFORMATION CONTAINED IN THIS DRAWING IS THE SOLE PROPERTY OF KARMAN RUBBER. ANY REPRODUCTION IN PART OR AS A WHOLE WITHOUT THE WRITTEN PERMISSION OF KARMAN RUBBER IS PROHIBITED.</small>	SIGNATURE		DATE	UNLESS OTHERWISE SPECIFIED: DIMENSIONS ARE IN INCHES TOLERANCES: .X = .XX = ± 0.031 .XXX = ANGLES = ±1° INTERPRET GEOMETRIC TOLERANCING PER: ASME Y14.5M-1994
	DRAWN	B. SENECAL	01/14/2015	
	CHECK	S. BROWN	01/14/2015	
	ENGR	B. SENECAL	01/14/2015	
	QA			
	STRESS			
	APPR			

**KARMAN RUBBER**  
**VIBRO-INSULATORS®**  
FOR CONTROLLING NOISE, SHOCK & VIBRATION

SIZE  
**B**

CAGE CODE

DO NOT SCALE DRAWING

TITLE: KS375 SERIES VIBRO-INSULATOR WWW.KARMAN.COM			
DWG. NO. KS375		REV 1	
SCALE: 1:1	WEIGHT: 3.0 OZ	SHEET 1 OF 1	